

G9A/G9B Sub-Miniature Micro Switch

3.5mm Travel Micro Switch



■ Features

- G9A Dust and Water Proof (IP67)/G9B Dust Proof (IP40)
- Small Compact Size
- Long Life and High Reliability
- Variety of Terminals
- Variety of Levers Optional
- Long Over travel of 2.20mm Minimum
- Widely used in Auto Control, Appliance and Other industry Control

■ Application

- ◆ Auto Electronics
- ◆ Home Appliance
- ◆ Apparatus and Instruments

■ Parameters:

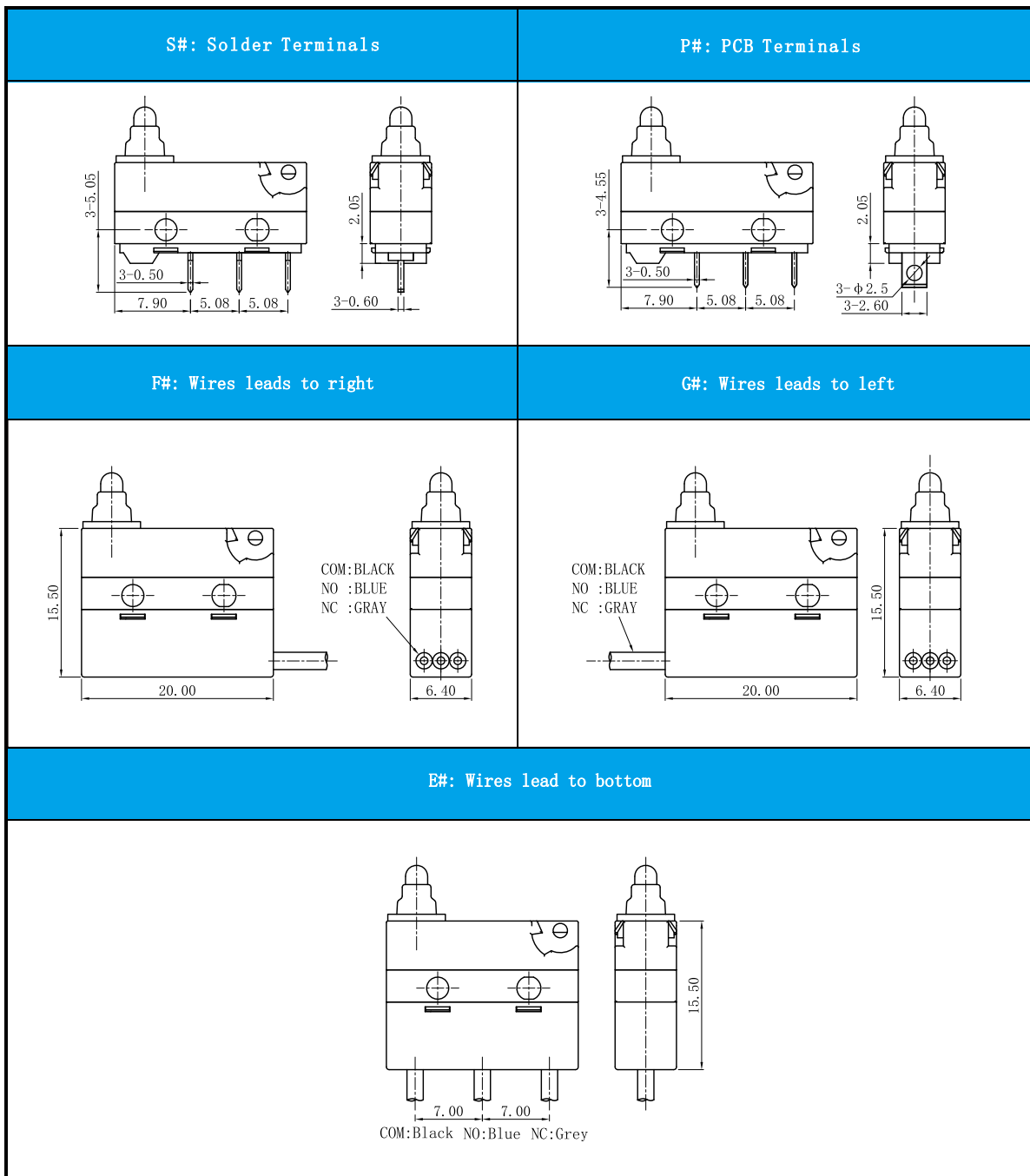
Rating	P1	0.1A 125/250VAC, 0.1A 30VDC
	05	5(2)A 125/250VAC, 5A 30VDC
Operating Frequency	Electrical	10~30 cycles/minute
	Mechanical	120 cycles/minute
Contact Resistance (Initial Value)	With terminals type	≤100m Ω
	With wire type	≤200m Ω (500mm)
Insulation Resistance (at 500VDC)		≥100M Ω (DC 500V)
Voltage Resistance	Between terminals	AC 500V, 50/60HZ, 1min
	Between terminals and uncharged metal parts	AC 1000V, 50/60HZ, 1min
Service Life	Electrical	50,000 cycles
	Mechanical	200,000 cycles (IP67) 2000,000 cycles (IP40)
Storage Temperature		-40~+85 °C
Storage Humidity		95% RH Max

G9A/G9B Series Micro Switch Ordering Instruction

G9A	05	200	S	01	A	F	300	T001	U
Switch Type	Electrical Rating	Max Operating Force at Pin Plunger	Terminal Type	Lever Type	Circuit code	Waterproof code	Wires length (AWG Number UL1007 AWG Type 20#)	Custom code	Logo
G9A IP67 G9B IP40 Series-Micro Switch	ENEC/CQC: 0.1A 125/250VAC 30VDC P: 40T85 μ 5E4 UL/CUL: 0.1A 125/250VAC 30VDC	200 200gf Max	S Solder Terminals	00 No Lever Pin Plunger	A SPDT	Low pressure injection molding	500mm length standard lead wires 500mm	T001	ZING EAR
	ENEC/CQC: 5(2)A125/250VAC 30VDC UL/CUL: 40T85 μ 5E4 5A 125/250VAC 30VDC	... Other	P Straight PCB Terminals	01 01 Plunger	B SPST-NC	Waterproof shell	300mm length	... Other	U Unionwell
	... Other		E Molded lead wires downwards	... Other	C SPST-NO	... Other	... Other	... Other	... Other
			F Molded Lead Wires Leads to right Side(Opposite to Pin plunger side)						
			G Molded Lead Wires Leads to left Side (Pin plunger side)						
			... Special Terminals						

■ Terminal Type

◆ Terminal thickness:0.5mm



Mounting Hole and Operating Characteristics

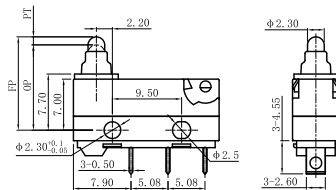
Mounting Hole Dimension	Mounting Hole Dimension of PCB Terminals
<p>2-ϕ 2.3mm mounting holes or M2.2 screw holes</p> <p>9.50 ± 0.15</p>	<p>3-ϕ 1.35~1.5dia</p> <p>2.60</p> <p>9.50 ± 0.15</p> <p>2.55</p> <p>5.08</p> <p>5.08</p>

Circuit

	SPDT	SPST-NC	SPST-NO

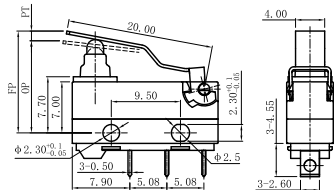
Dimensions and Operating Characteristics

◆ G9A□□-□□□S00A



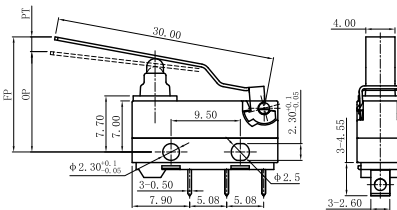
OF Max. (gf)	RF Min. (gf)	PT Max. (mm)	OT Min. (mm)	DT Max. (mm)	FP Max. (mm)	OP (mm)
-200	200	20	1.7	2.2	0.9	13.0
						11.7 ± 0.4

◆ G9A□□-□□□S01A



OF Max. (gf)	RF Min. (gf)	PT Max. (mm)	OT Min. (mm)	DT Max. (mm)	FP Max. (mm)	OP (mm)
-200	200	20	2.9	2.2	1.0	14.5
						12.6 ± 0.8

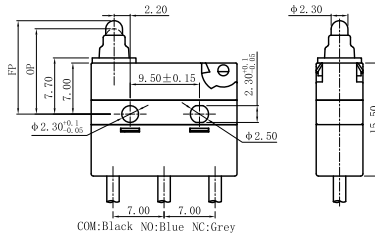
◆ G9A□□-□□□S02A



OF Max. (gf)	RF Min. (gf)	PT Max. (mm)	OT Min. (mm)	DT Max. (mm)	FP Max. (mm)	OP (mm)
-200	150	20	4.0	2.9	1.3	16.5
						13.5 ± 1.0

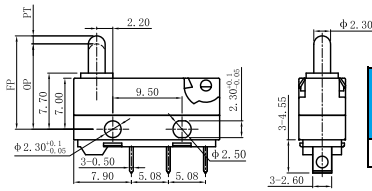
■ Dimensions and Operating Characteristics

◆ G9A□□-□□□E00A



OF Max. (gf)	RF Min. (gf)	PT Max. (mm)	OT Min. (mm)	DT Max. (mm)	FP Max. (mm)	OP (mm)
-200	200	20	1.7	2.2	0.9	13
11.7 ± 0.4						

◆ G9B□□-□□□S00A



OF Max. (gf)	RF Min. (gf)	PT Max. (mm)	OT Min. (mm)	DT Max. (mm)	FP Max. (mm)	OP (mm)
-200	200	20	1.7	2.2	0.9	13.0
11.7 ± 0.4						